

VALVE REMOVAL / FITTING INSTRUCTIONS

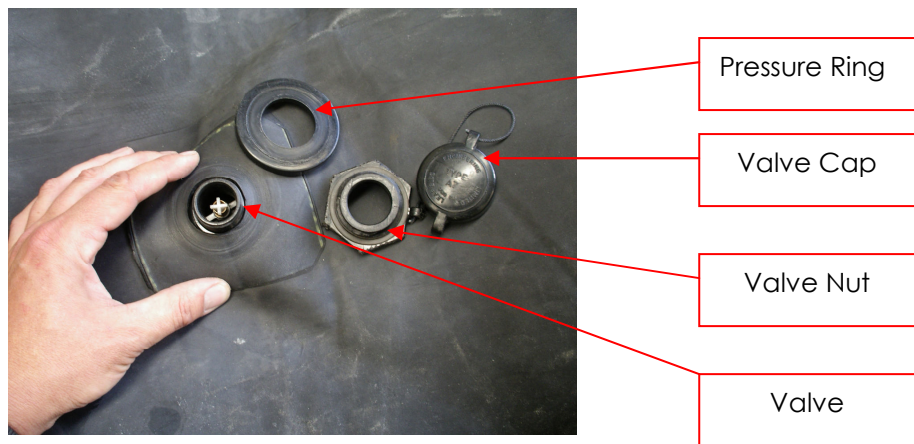
Valve Removal;

To remove the valve from the inner tube, it may first be necessary to remove the inner tube from the boat (see *Helpsheet "Inner Tube Removal and Fitting"*).

However, if the valve is positioned close to the bow or transom (which is most likely in hulls with one inner tube per side), it may be possible to partially withdraw the tube until the valve is exposed.

When the valve is readily accessible;

1. Unscrew the valve nut and remove the pressure ring, leaving just the main body (i.e. the threaded portion) of the valve protruding from the inner.



2. Grip one side of the valve patch, taking care that the valve does not slip into the inner tube.
3. Holding the valve stem (threaded portion) at an angle to reduce the area to pass through the inner tube, work the valve out of the hole until at least one of the shoulders (at the base of the valve) is exposed.



NAIAD INFLATABLES (NZ) LTD

TIP: Some older tubes have thick valve patches which can be difficult to stretch. The application of heat will make the butynol more supple.

Alternatively, a cross-headed screwdriver (to minimize the risk of puncture) can be used. Insert the head of the screwdriver between the valve and the inner tube (i.e. through the valve hole) and work one of the four shoulders free. Repeat to free a second shoulder and the valve should now be removed easily. **TAKE GREAT CARE NOT TO PUNCTURE THE INNER TUBE!**

The butynol is very strong and, when reinforced by the valve patch, can be stretched without risk of tearing.

4. Whilst still pulling one side of the valve patch away from the stem, work the remaining shoulders free (it may help to rotate the valve as pressure is applied).



5. The valve is now fully removed.



Valve Fitting;

1. Unscrew the valve nut and remove the pressure ring.
2. Grip one side of the valve patch.
3. The valve nut has four shoulders surrounding the cup diaphragm at its base. Insert one of these shoulders into the valve hole, whilst stretching the hole away from the valve.

NAIAD INFLATABLES (NZ) LTD



TIP: On a cold day, it may be helpful to repeatedly stretch the valve hole first (by inserting one finger from each hand and pulling apart) to soften the butynol. Heat can be also be applied (place the tube in the sun, use a hair drier or gently use a heatgun).

Alternatively, a cross-headed screwdriver (to minimize the risk of puncture) can be used for leverage. TAKE GREAT CARE NOT TO PUNCTURE THE INNER TUBE!

The butynol is very strong and, when reinforced by the valve patch, can be stretched without risk of tearing.

4. Work the valve body into the inner tube. It may be helpful to rotate the valve whilst stretching the hole with the other hand.



5. With the valve body inside the inner tube, ensure that the unthreaded portion of the valve stem (the shank) protrudes from the inner. Replace the large plastic washer (ridged side down) and valve nut.



Do not overtighten the nut as this may cause difficulties when installing the inner tube.

The inner tube is now ready for fitting.