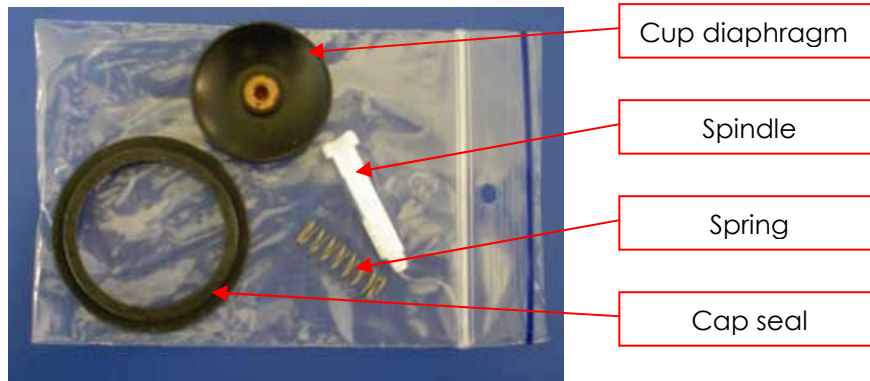


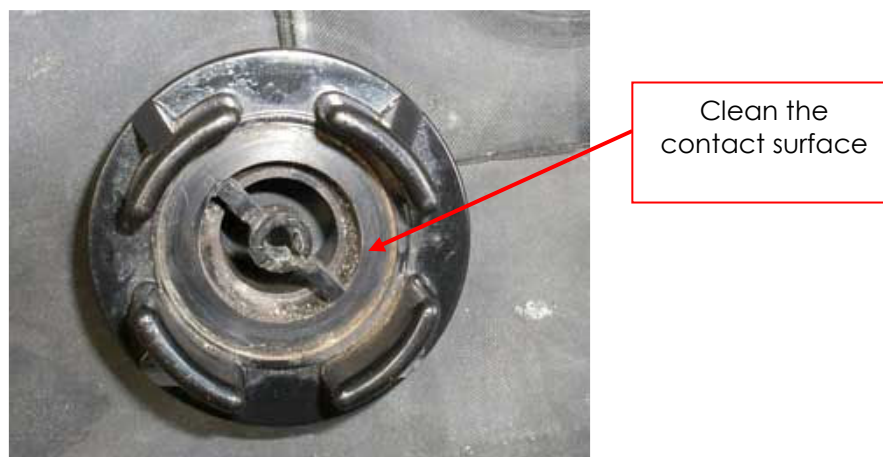
## VALVE SERVICING (VALVE REPAIR KITS)

To service the valve, it is first necessary to remove the valve from the inner tube (see accompanying Helpsheet "Valve Removal / Fitting Instructions").

The Valve Repair Kit is made up of four replaceable components; a spindle, a spring, a cup diaphragm and a cap seal;

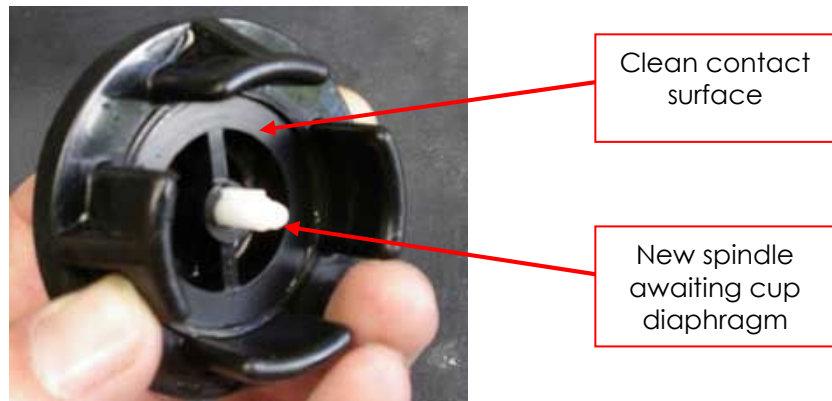


1. With the valve in the open position (i.e. depress spindle and give it a quarter-turn to counter-clockwise), remove the old cup diaphragm from the valve by unthreading (counter-clockwise) it from the spindle. If the female thread on the cup diaphragm has perished, the cup diaphragm will come away easily. However, it may be necessary to use pliers to snap the spindle to dismantle the valve.
2. Remove the spring and the spindle from the valve body.
3. Inspect the valve body to ensure the structure is sound. Very rarely, fractures can form in the valve stem (usually from the valve nut being over tightened) and in this case, the valve will need to be replaced.
4. Turn the valve over and ensure that the area of the valve that meets the cup diaphragm is clean and free from sediment. Use a rag or cotton bud. Do **not** use anything oil-based as this may damage the rubber diaphragm.

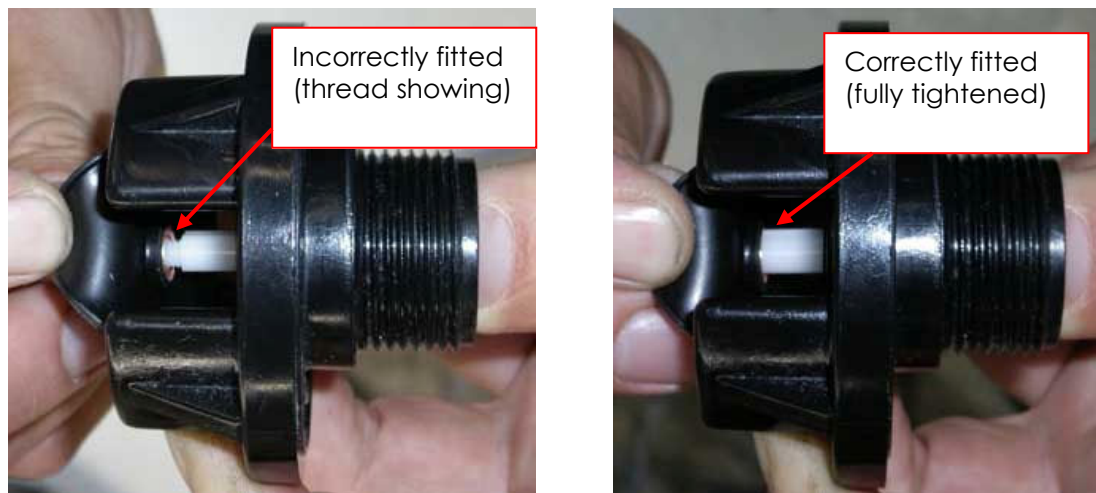


# NAIAD INFLATABLES (NZ) LTD

5. Place the spring over the spindle and insert the spindle through the central hole on the valve body and turn it to lock open (quarter-turn counter-clockwise)



6. Attach the cup diaphragm to the spindle (threaded clockwise). Ensure that the diaphragm is done up tight and that no threaded portion of the spindle is visible.



7. Peel off the old cap ring and replace.



The valve is now ready to be installed into the inner tube.

See accompanying *Helpsheet "Valve Removal / Fitting Instructions."*